













eSTORE[®]
Beta LAYOUT

Smart Reader App Manual

Beta
LAYOUT

Smart Reader App

 + 	➔	ID
 +  + 	➔	URL + ID
 + 	➔	Text
 +  + 	➔	Edit Text

Close

www.beta-eSTORE.com

Beta LAYOUT GmbH • Im Aartal 14 • 65326 Aarbergen

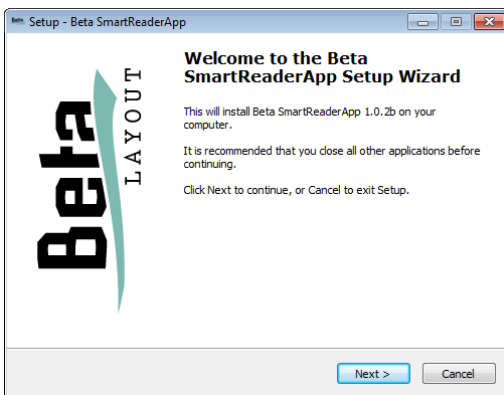
Telefon + 49 (0) 61 20 / 90 70 10 • Fax + 49 (0) 61 20 / 90 70 14

Beta
LAYOUT
create:electronics

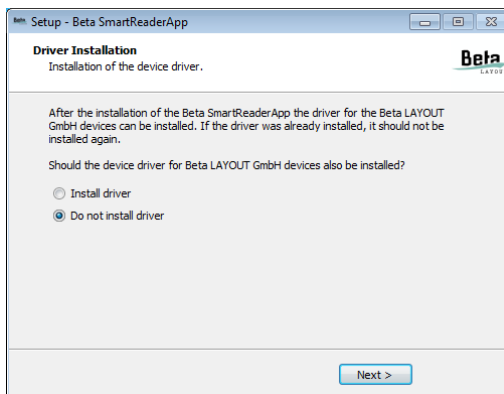
1. Installing the Smart Reader App



To install the Smart Reader App execute the "SmartReaderApp Setup".



Proceed step by step through the installation and select the desired options.



On the last page, after the completion of the installation, you will be asked whether or not you want to install the driver for RF-Embedded devices. If you are installing the Smart Reader App for the first time, you should install the driver. If you have already installed the Smart Reader App, including the driver previously, the installation of the driver is not necessary.

2. Working with the Smart Reader App

To be able to work with the Smart Reader App, there are only two things that need to be implemented:

1. Start the Smart Reader App
2. Connect a USB reader



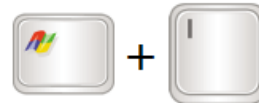
After having starting the Smart Reader App, a tray icon will appear. At first the icon is completely black. In this state the Smart Reader App has not yet detected the reader.



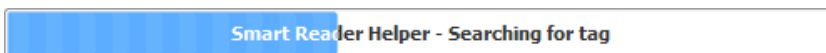
If a reader is attached and detected by the Smart Reader App the icon will switch to blue. In this state the application is initialized and a scan process can be started.

Before starting a scan process, select the input field regarding, where you want the ID to be filled in. This input field can be any application field, in which text can be entered. For example Notepad, Word, Excel, Outlook, MES input masks ...

To start a scan process , it suffices to press the set key combination. By default this key combination is:



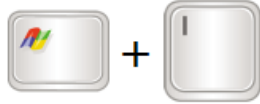
When the scan process is started, a progress bar will appear which shows the progress of the application.



If a tag was successfully detected, the detected ID is entered into the selected input field.



eSTORE[®]
Beta LAYOUT



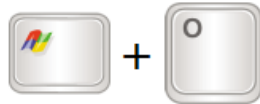
ID

Scanning the tag (s.a.)



URL + ID

A key combination connects the tag with an external URL



Text

Text is read out of the tag



Edit Text

Write text on the tag



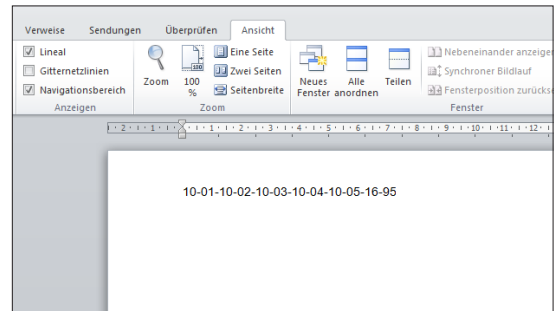
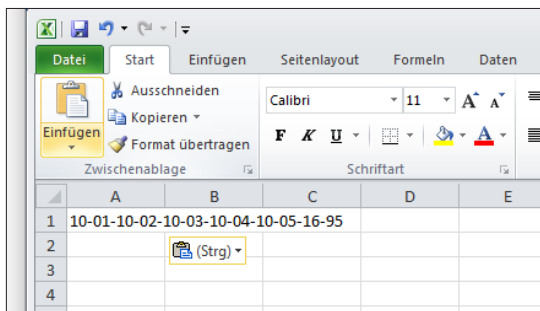
Caution: The button corresponds to the capital letter I on the keyboard.



The button corresponds to the capital letter O on the keyboard.

3. Using the output of the Smart Reader App

The Smart Reader App can simply be used, to write IDs to an input field like in Word, in Excel or to any other application, which has an input field.





4. Settings for the URL

Windows XP:

C:\Dokumente und Einstellungen\{BenutzerName}\Anwendungsdaten\Beta Layout Gmbh\SmartReaderApp.ini

Windows 7:

C:\Users\{BenutzerName}\AppData\Roaming\Beta Layout Gmbh\SmartReaderApp.ini

The structure is as follows:

```
[URL]
PreUrl="http://www.google.de/search?q="
PostURL=
Hex=true
StartByte=0
ByteCount=8
```

The composition is as follows:

URL = PreURL + ID + PostURL

The section of the ID is indicated by StartByte and ByteCount.

You can indicate 8 bytes at maximum for the ByteCount.

5. Quitting the Smart Reader App

Quit the application by clicking "Quit" at the bottom on the bar in the pop-up menu.

